

## Full HD (1080P) Vehicle Accident Camera with 2.4" LCD Monitor for Live View, Playback & Setup



# SVC1080

### Full HD (1080P) Vehicle Accident Camera with 2.4" LCD Monitor for Live View, Playback & Setup, Integrated 3-axis G-Sensor and Integrated GPS Receiver

The SVC1080 is a 1080P Full HD vehicle accident camera with a 2.4" LCD Monitor for live viewing, playback and setup. In addition, the camera features an integrated 3 axis G-sensor and integrated GPS receiver. This evidence can protect a driver from many of the issues faced on the roads today:

- Cash for Crash/Pre-meditated staged accidents
- False/Exaggerated Whiplash Claims
- Conflicting Reports of Actual Events
- Lack of Witnesses
- Driving Offence Allegations (Speed Cameras, Traffic Signal Violations etc...)



- High Quality Insurance Approved 170° (Pillar-to-Pillar) viewing angle
- Adjustable recording frame rate - 10fps or 30fps
- Real Time HD Images before, during and after an incident, ensuring that no evidence is lost, even when not recording in continuous mode
- Optional Audio Recording
- Flexible recording modes



The SVC1080 features a full HD (1080P), 170° lens to provide a comprehensive view of any incident. The SVC1080 will record exactly what happened before, during and after an incident. It does this by recording the following information;

- Drivers view of the road
- Vehicle Location
- Impact Force of an incident
- Driving Style (speed, acceleration, braking & steering)

In addition to this, the recorder features a 2.4" LCD display and optional audio recording. The SVC1080 is designed to look like a part of the vehicle with a small and unobtrusive frame, preventing any unwanted attention from passengers or passers by.

Designed for simple DIY installation, the SVC1080 attaches to the inside of your windscreen using a high strength adhesive pad. In the event of an incident/accident occurring, the user can simply remove the SD Memory Card from the unit and plug it into a Windows PC using the included USB SD Card Reader. You can then playback, search, backup and email recordings, using the Smart Witness Analysis Software provided.

The SVC1080 also comes with free use of the SmartWitness Cloud Service. This service allows you to easily transfer data recorded by the unit to anyone, anywhere in the world, instantly.

## Features

The SVC1080 is Full HD (1080P) vehicle accident camera that features a 2.4" LCD monitor for live view, playback & setup. In addition to this, the recorder offers many unique features, including;

## Recording:

- High Quality Insurance Approved 170° (Pillar-to-Pillar) viewing angle
- Adjustable recording frame rate - 10fps or 30fps
- Real Time HD Images before, during and after an incident, ensuring that no evidence is lost, even when not recording in continuous mode
- Optional Audio Recording
- Flexible recording modes:
  - Event - records whenever an incident/accident is detected by the unit's built in Shock Sensor (G-Sensor)
  - Continuous - records all the time and bookmarks the recording whenever the Shock Sensor detects an incident/accident
  - Parking - in addition to the above modes, the unit can be optionally set to record all the time when the vehicle is stationary for longer than 5 minutes or is parked up (the unit must be wired to a permanent power feed to record when vehicle is parked).
- Overwrite function for First In First Out loop recording in 10 minute sections
- Password protected recordings, preventing unauthorized access of recordings and data on the SD card

## Playback & Analysis:

Includes the SmartWitness SVC1080 Analysis software for Windows and Mac, allowing you to:

- Playback recordings
- Search recordings by time/date
- Search by vehicle speed
- Search by incident/accident
- Save JPEG snapshots
- Save AVI file backups
- Export data for Google Maps for detailed information on driver location and journey

## Additional Features:

- Built-in GPS receiver, ensures the highest accuracy for vehicle location and speed
- Full Google Maps, Google Earth and Google Street View Integration
- Advanced 3rd generation Bosch G Sensor - Thatcham Tested
- Easily Upgradable comms interface - 3G, 4G, Wifi, WiMax, Bluetooth ready
- Enhanced vehicle information reporting including location, speed & driving style

## Physical:

- Manufactured using light weight polycarbonate, keeping the unit small and light
- Hard wiring prevents unauthorised unplugging of unit
- 2.4" LCD Monitor for Live Viewing

## Approvals:

- CE, RoHS, FCC and Emark approved for extra piece of mind

## Other Benefits:

- Designed in house by our experienced R&D team and manufactured in our own state of the art facilities
- No on-going subscription fees or other charges
- Powerful platform with remote upgrade of firmware & features

## Accessories

- 4GB High Speed SD Card
- 16GB High Speed SD Card
- 32GB High Speed SD Card

## What's In The box

- SVC1080 Vehicle Accident Camera
- 3m Mounting Bracket
- Cigarette Lighter Adaptor
- User Manual



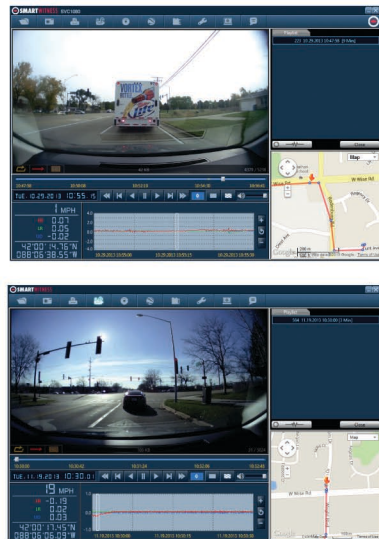
**Specification:**

**Full HD (1080P) Vehicle Accident Camera with 2.4" LCD Monitor for Live View, Playback & Setup (Model: SVC1080)**

Image Sensor	1/3" 3 Megapixel CMOS Sensor
DSP	Standard DSP
Angle of View	170°
Video Resolution	VGA (640x480), 720P (1280x720), 1080P (1440x1080) Full HD (1920x1080)
Recording Speed	Up to 30fps
Recording Modes	Normal (Continuous), Event (Shock Sensor, Panic), Parking Mode
Recording Time	8GB (50min ~ 960min) 32GB (470min ~ 150min)
Backup	Micro SD Memory Card
Memory	Supports Cards of up to 32GB (Class 10)
Maximum Event Files	Shock Sensor: 10, Panic: 10
GPS	Internal GPS
G-Sensor	Internal 3-Axis G-Sensor
RTC	Internal Battery
Buzzer	Event Trigger Alarm, Micro SD Card Error
LED	2 LEDs (Recording - Red, Power - Green)
PC Software	Available from the Smart Witness Website
Power Input	DC 5V (Cigarette Lighter Plug or Permanent Power Connector)
Power Consumption	5W
Dimensions (wxhxd)	88x55x17mm
Weight	0.075kg
Operating Temperature	-10° ~ 60°C

**SVC1080 PC/Mac Viewer Software:**

SmartWitness Analysis Software included with every unit.



**Package Contents:**



Contact us for quantity and reseller pricing. Flexible finance options available for UK businesses, call for details.

[www.smartwitness.com](http://www.smartwitness.com)

