

SVA028-C



Features

- 1/3" SONY EXview Super HD 960H CCD
- 700TV Lines Horizontal Resolution
- Excellent Low Light Sensitivity of 0.3Lux/F1.2
- Day & Night
- IR Smart
- De-moire
- DWDR : Digital Wide Dynamic Range
- DNR : Digital Noise Reduction
- BLC : Back Light Compensation
- HLC : High Light Compensation
- Dead Pixel Correction
- Lens Shading
- Privacy Mask
- Board Lens f=2.9(120')mm (Option 2.45mm(150') Lens)
- 4 PIN DIN Connector for Waterproof
- DC 12V

*Extension Cable: 5m, 10m, 15m, or 20m



1/3 SONY SUPERHAD II CCD



DAY & NIGHT



DIGITAL WDR
DIGITAL WIDE DYNAMIC RANGE



DNR
DIGITAL NOISE REDUCTION



BLC
BACKLIGHT COMPENSATION



HLC
HIGH-LIGHT COMPENSATION



DPC
DEAD PIXEL COMPENSATION



LSC
LENS SHADING COMPENSATION



VANDAL PROOF

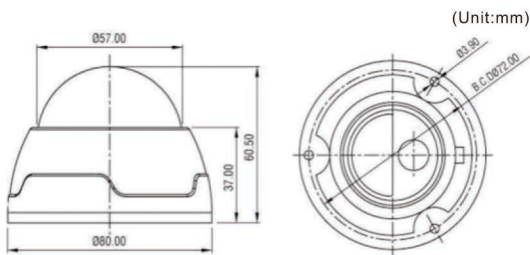


2.9mm BOARD LENS



DC 12V

Dimensions



Cable



Extension Cable available in 5m, 10m, 15m, 20m

Alternative Views



Specifications

SVA028-C		
Signal Format	NTSC	PAL
Horizontal Resolution	Horizontal : 700 TV-Line (Color)	
Image Sensor	SONY 1/3" EXview HAD CCD, Super HAD II CCD	
Total Pixels	1020(H) x 508(V)	1020(H) x 596(V)
Effective Pixels	976(H) x 494(V)	976(H) x 582(V)
Scanning System	2:1 Interlace	
Synchronization	Internal	
Scanning Frequency	15.734 KHz(H), 59.94 Hz(V)	15.625 KHz(H), 50.00 Hz(V)
Video Output	CVBS : 1.0Vp-p/75Ω	
Min. Illumination	Color : 0.03Lux(50IRE@F1.2)	
Electronic Shutter	1/60 ~ 1/100,000 sec	1/50 ~ 1/100,000 sec
Iris Control	DC / VIDEO / MANUAL	
Signal to Noise Ratio	52dB (AGC Off, Weight On)	
Backlight Compensation	DWDR / BLC / HSBLIC / Off	
White Balance	ATW / AWB / AWC-SET / MANUAL	
D - EFFECT	Mirror / NEG.IMAGE	
Gain Control	Low / Middle / High / Off	
DNR	ON / OFF (Level Adjustable)	
Day & Night	Color/ Auto / EXT / Night(B/W)	
IR Smart	ON / OFF	
Digital WDR	ON / OFF	
Dead Pixel Correction	AUTO (73/247 Points)	
Image Adj	Sharpness / Monitor / Lens Shading / Defect	
Coaxitron control	Support	
Language	English / Chinese / Espanol / Russian /Deutsch / Portuguese / French / Japanese	
Input Voltage	DC 12V (±10%)	
Power Consumption	200mA	
Operating Temperature	-10°C ~ +50°C (+14°F ~ +122°F)	
Operating Humidity	30% ~ 80% RH	
Dimension	57mm (Ø) x 80mm (W) x 60.5mm (H)	
Weight	Approx. 400g	